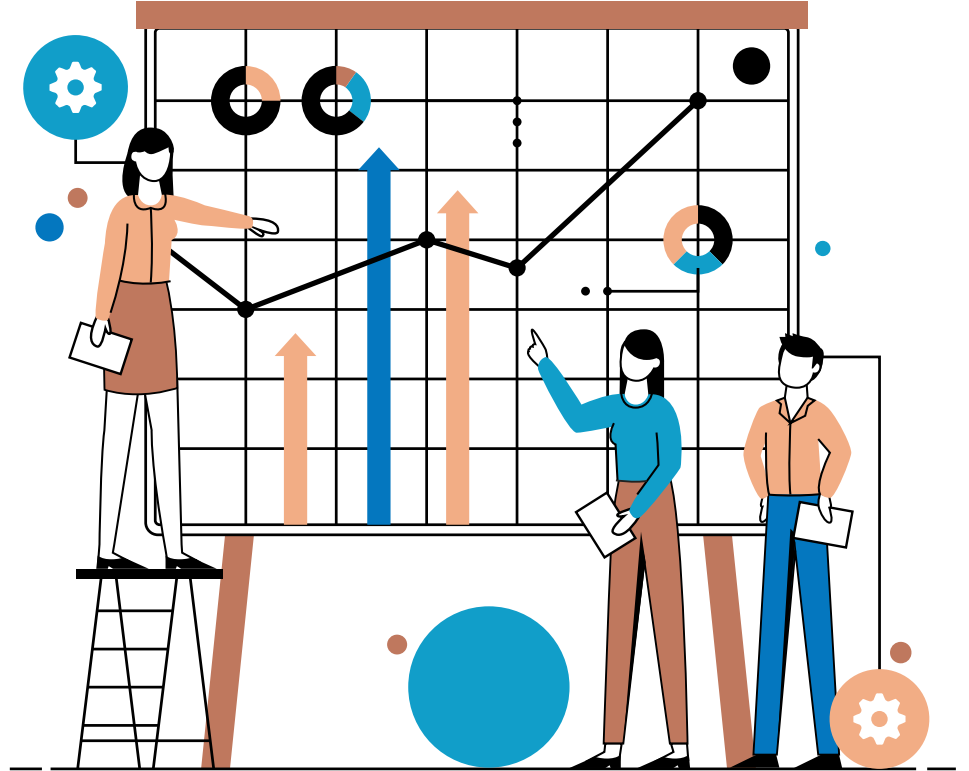


KCIA Student Services

Engagement, Demographics
and Services

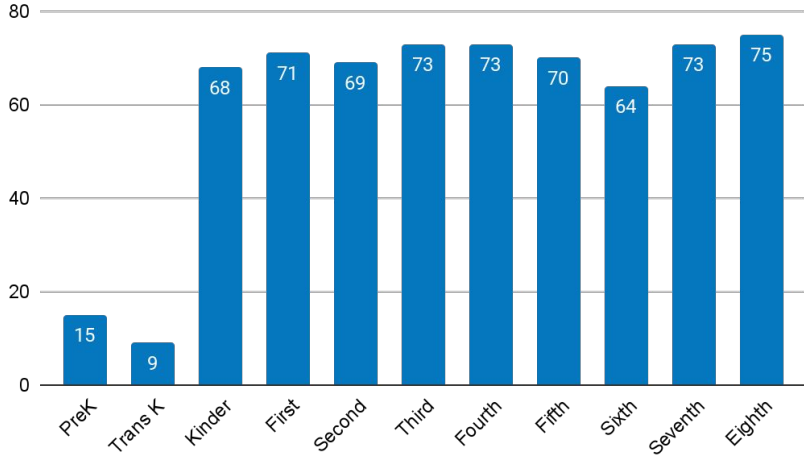


Engagement Measures

KCIA Enrollment Update

Updated March 16, 2023

Enrollment by Grade



Total Enrollment



15
PreK @ DL

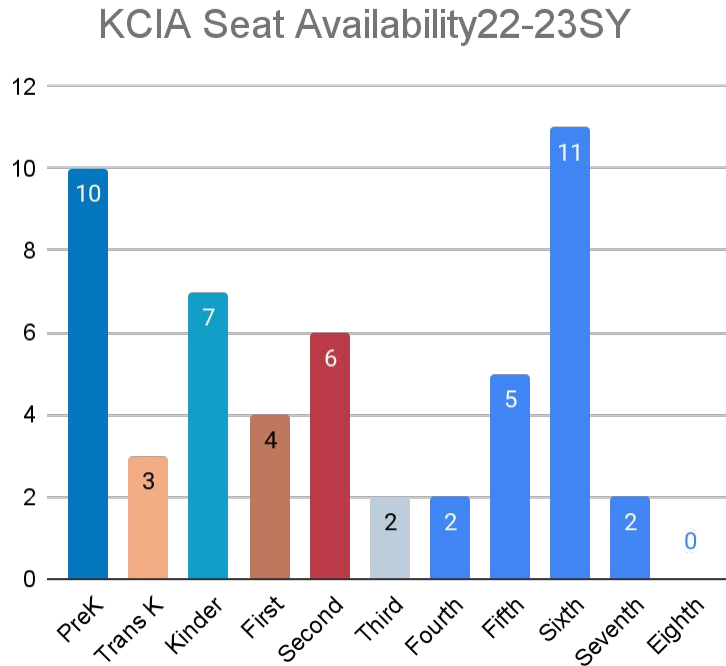


645
TK-8th

660
Total PreK-8th

Open Seats and Waitlist Count

Updated March 16, 2023



Lottery Update

The schoolappkc.org lottery for the 23-24 school year ran on Monday, March 6. To date parents have accepted 32 seat offers. There are 23 outstanding offers with a due date of March 31. We will continue to make new seat offers until all available seats are filled for the 23-24 school year.

Re-Enrollment for existing families continues with commitments due by April 14th.

Month to Month Enrollment Comparison

Updated March 16, 2023



Enrollment

Total PK-8 Enrollment
(Max Capacity = 687)



Seats Available

Total PK-8 number of open seats



Waitlist Count

Total PK-8 waitlist counts



KCIA Attendance Report

Average % Present Daily-updated 3/16/23

TK-8th Grade

90.74%



Average % of
student body
present each day

Elementary

90.48%



Average % of
TK-5th graders
present each
day-increased
illness

Middle School

91.28%



Average % of
6th-8th graders
present each day

KCIA Attendance Report

ADA-updated 3/16/23

TK-8th Grade

581.68

Elementary

387.36

Middle School

194.32

Average Daily Attendance (ADA)

Average Daily Attendance is defined as days of student attendance divided by the number of days in the regular school year. A student enrolled all year and attending every day would equal 1 ADA. Strategies for increasing ADA are to increase enrollment or improve attendance. The state uses ADA to determine funding.

KCIA Attendance Plan

Strategies for Improved Attendance



Communication

Daily calls, texts, emails to parents and leadership update



Attendance Success Plans

Family meetings for students whose attendance has dropped below 80%



Family Supports

Van pickup, supplemental transportation, home visits



Incentives

43 TK-5 students are participating in an attendance mentoring program.

Demographics

Countries of Birth

KCIA students come from 27 different countries. Currently 23% of our students are immigrants or refugees. Refugee students may belong to a nationality that is not the same as his/her birth country. Refugee families are often forced to flee their countries of nationality to the safety of a nearby refugee camp or evacuation point. Many of our students are born in refugee camps before arriving in the United States. For example, a student may have been born in Slovakia but his/her nationality is Somali.

Afghanistan	Cameroon	Cuba	Djibouti
Egypt	Ethiopia	Guatemala	Honduras
Iraq	Kenya	Myanmar	Mexico
Pakistan	Sudan	Slovakia	Somalia
El Salvador	Syria	Chad	Thailand
Turkey	Tanzania	Uganda	Vietnam
South Africa	United States	Zaire	

Home Languages

KCIA families speak over 15 languages. Both written and spoken home-school communication is routinely translated and provided as options for parents in addition to English communication.

Arabic	MaiMai	Burmese	English
French	Karen	Kinyarwanda	Marshallese
Dari	Pashto	Farsi	Somali
Spanish	Swahili	Kiswahili	Vietnamese
Mashaguli	Urdu		

Student Demographics

